

**Saver EVO<sup>®</sup>**  
User Manual

## Table of contents

<b>Saver EVO user instructions</b>	<b>3</b>
Download from website	3
Quick instructions	3
<b>Using Saver EVO</b>	<b>4</b>
<b>Using Saver EVO with the HeartSine samaritan PAD</b>	<b>4</b>
<b>Retrieving event data information from the HeartSine samaritan PAD</b>	<b>5</b>
Viewing events on a HeartSine samaritan PAD	6
Erasing memory on a HeartSine samaritan PAD	7
<b>Changing HeartSine samaritan PAD settings</b>	<b>7</b>
Check/Set PAD Time	8
Run Diagnostic Tests	8
Edit PAD Configuration	9
<b>Using Saver EVO with the PDU*</b>	<b>9</b>
<b>Retrieve event data from the PDU memory card</b>	<b>10</b>
Viewing events stored on a PDU	11
<b>View PDU settings</b>	<b>12</b>
<b>Using Saver EVO with saved events</b>	<b>12</b>
Export and import	13
<b>Change Saver EVO settings</b>	<b>14</b>
<b>Cyber Security</b>	<b>16</b>

The information in this document is subject to change without notice and does not represent a commitment on behalf of HeartSine Technologies, Ltd. No part of this manual may be reproduced or transmitted in any form or by any means, electrical or mechanical, including photocopying and recording for any purpose without the express written permission of HeartSine Technologies, Ltd.

heartsine.com  
heartsinesupport@stryker.com

## Saver EVO user instructions

Saver EVO software allows you to retrieve defibrillation event data from your HeartSine samaritan PAD and PDU Memory Card. Saver EVO will also allow the management of event data that has been saved to the PC with respect to printing, importing, and exporting event data to other Saver and Saver EVO users.

Saver EVO is provided with a software license to allow the installation and use of the software on a single PC running Microsoft Windows (preferably Windows 10).

### Download from website

Installation of Saver EVO may require administration permission – if necessary contact your system administrator/IT services provider.

1. Go to [heartsine.com](http://heartsine.com) to download the Saver EVO software for your region.
2. Following download, run “SaverEVO\_setup.exe” to install Saver EVO. (Follow on-screen instructions.)
3. Read the user license agreement. In order to install this software you must accept the terms of this agreement. To accept the terms click the “Next” button.
4. Saver EVO will be installed in its default location with its standard configuration. Click the “I agree” button to accept. These default settings should not be altered unless you are an experienced computer user.
5. If asked about device driver certification click “Continue anyway” button.

### Quick instructions


To retrieve recorded defibrillation event data from the HeartSine samaritan PAD or PDU Memory Card.

1. Connect the relevant device to the PC.
2. Open Saver EVO software.


3. Click  button or  button.

4. Click  button to display a list of saved events.

5. Highlight the required recorded event from the list.

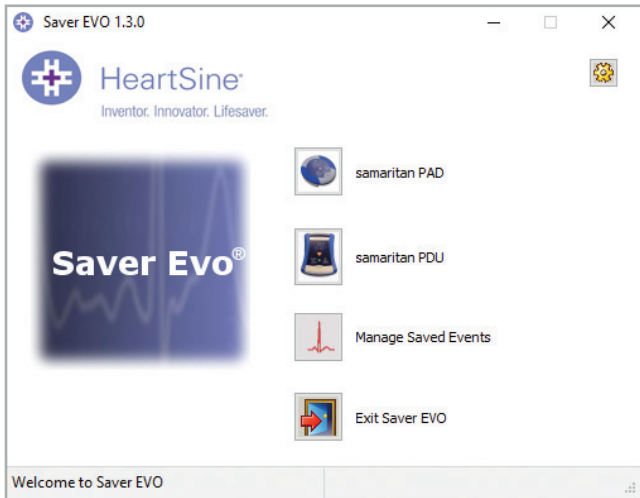
6. Click  button to view the event.

7. Click  button and enter patient information as required to save the event on the PC.

8. If required, click  to print the event record.

## Using Saver EVO

The Saver EVO Start screen is shown below.



**Saver EVO Start screen**

<b>samaritan PAD</b>	Opens the menu for functions specific to the HeartSine samaritan PAD. <i>See page 4 for details</i>
<b>samaritan PDU</b>	Opens the menu for functions specific to the PDU. <i>See page 9 for details</i>
<b>Manage Saved Events</b>	Opens the menu for functions specific for events saved to the PC. <i>See page 12 for details</i>
<b>Exit Saver EVO</b>	Exits the Saver EVO software
<b>Change Saver EVO password</b>	Change the Saver EVO password and select language option. Also allows user to view Saver EVO revision information

Using the specific menus above will be covered in more detail in later sections.

## Using Saver EVO with the HeartSine samaritan PAD

To use Saver EVO with the HeartSine samaritan PAD you need the USB data cable (which may have been supplied with your HeartSine samaritan PAD). If you do not have the cable, please contact your Stryker sales representative or Authorized Distributor. If a HeartSine Gateway is connected to your AED, you may use a micro USB cable.

1. Using the USB data cable, connect this to the HeartSine samaritan PAD and to the USB port on your PC. Open the Saver EVO software.

2. Clicking the “samaritan PAD” button will open the window shown below.



**Saver EVO PAD Access screen**

**PAD Data**

Click this button to retrieve event data from the HeartSine samaritan PAD. *See page 5 for details*

**Change PAD Settings**

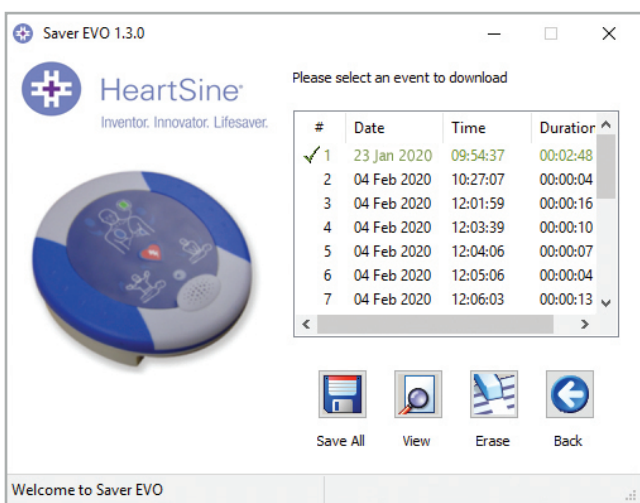
Click this button to run diagnostic tests or change the configuration (volume and time) on the HeartSine samaritan PAD. *See page 7 for details*

**Back**

Click this button to return to the Saver EVO start screen.

## Retrieving event data information from the HeartSine samaritan PAD

To retrieve defibrillation event data from HeartSine samaritan PAD ensure that your HeartSine samaritan PAD is connected to the PC and then click the “PAD Data” button. This will search the memory of HeartSine samaritan PAD and list all recorded events and display as shown below.



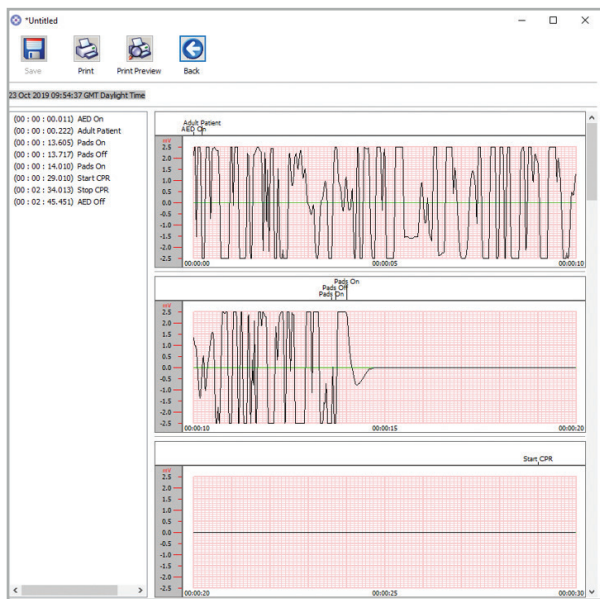
**Saver EVO PAD Event Log List screen**

Events shown in green text with a  symbol are events that have already been saved to the PC.

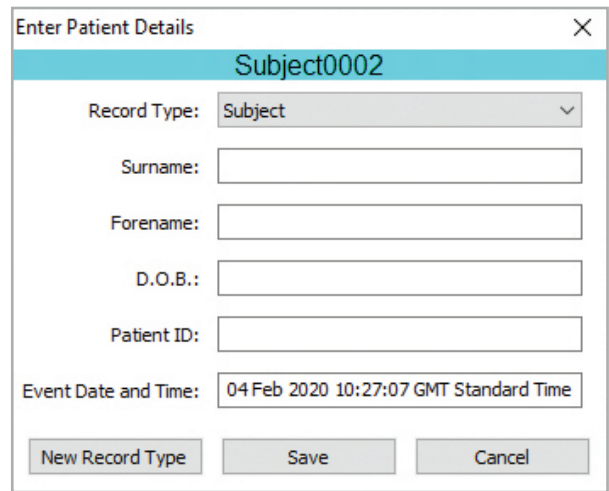
<b>Save All</b>	<p>Clicking on the “Save All” button will cause all the events listed in the PAD event log to be saved to the PC in a single file</p> <p><b>Note:</b> Events saved by this method cannot be retrieved for viewing by this version of Saver EVO. For retrieval of events from this file, contact HeartSine Technologies customer support. <i>To save events individually for retrieval later please refer to the “Save” function in Viewing events on a HeartSine samaritan PAD on page 6</i></p>
<b>View</b>	<p>Clicking this button will cause the selected event to be displayed</p>
<b>Erase</b>	<p>Clicking this button will erase all events from the HeartSine samaritan PAD event log. <i>See page 7 for more detailed advice on erasing data</i></p>
<b>Back</b>	<p>Click this button to return to the Saver EVO PAD Access screen</p>

### Viewing events on a HeartSine samaritan PAD

- To view an event, highlight the event in the list and then click the “View” button. This will display the defibrillation event with the ECG trace and the event log in a single viewing window.



Saver EVO PAD Event View window



Saver EVO PAD Patient Details window

- You can now choose to save this displayed event to the PC by clicking the “Save” button. Events saved in this way can be retrieved and viewed in Saver EVO. This provides options to enter information to be able to identify the patient from the list of saved events on the PC. The details about the patient can consist of alphanumeric characters and each field can be completed or left blank if desired.

**Note:** Once the defibrillation event data is saved to your PC this information cannot be changed

The Saver EVO event view window also provides the following buttons:

<b>Print</b>	Click this button to print the event currently displayed in the view window
<b>Print Preview</b>	Click this button to preview the printed data on the screen
<b>Back</b>	Click this button to return to the Saver EVO PAD event log list screen

## Erasing memory on a HeartSine samaritan PAD

1. To erase the memory of a HeartSine samaritan PAD click the "Erase" button.
2. As a caution Saver EVO will ask you to enter your Password prior to the memory being erased. When the correct password is entered the memory of HeartSine samaritan PAD will be erased. *For information on how to change the default password please see Changing the Password in Saver EVO on page 14.*

It is recommended that when event data is retrieved from the HeartSine samaritan PAD and saved to the PC that the events should be erased from the memory of the HeartSine samaritan PAD. This will ensure that the complete memory is available for recording the data from another defibrillation event.

**⚠ Caution:** HeartSine recommends that you download the complete HeartSine samaritan PAD memory prior to erasing it. This information should be stored safely for future reference

## Changing HeartSine samaritan PAD settings

The "Change PAD Settings" button allows users to configure some features of the HeartSine samaritan PAD as follows:

- Check/Set time
- Run diagnostic tests

In addition users with the relevant authority can change the following:

- Volume
- Metronome sound enable/disable

1. Clicking on the "Change PAD Settings" button will access the following screen:



**Saver EVO Change PAD Settings window**

## Check/Set PAD Time

This button allows users to synchronize the time on HeartSine samaritan PAD with the time on their PC.



**Saver EVO Check/Set PAD Time window**

1. Click the “Synchronize” button to set the time on HeartSine samaritan PAD to the same time as the PC to which it is connected.
2. Click the “Close” button to return to the Saver EVO Change PAD Settings window.

## Run Diagnostic Tests

This button allows the user to run some basic tests to check that their HeartSine samaritan PAD is functioning. The list of available diagnostic tests is accessed from a drop-down menu as shown below.



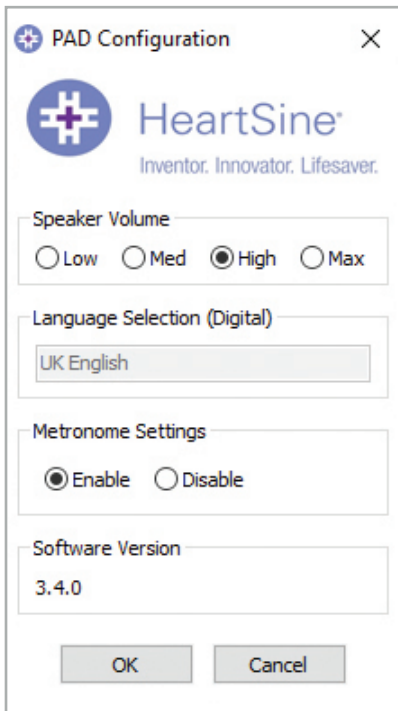
**Saver EVO PAD Diagnostic Tests window**

Saver EVO will identify the type of PAD device attached and will display the appropriate label illustrations to guide the user during tests.



## Edit PAD Configuration

Click this button to open the Edit PAD Configuration window (*shown below*), where you can view and change volume and metronome settings, and view the software version for the connected HeartSine samaritan PAD device. To confirm these changes, you will be prompted to enter the Saver EVO password. *For information on how to change the default password please see Changing the Password in Saver EVO on page 14.*



**Saver EVO Edit PAD Configuration window**

## Using Saver EVO with the PDU\*

1. To use Saver EVO with the samaritan PDU memory card, you must insert the card into a MMC/SD compatible card reader that is either connected to or built into the PC that is running Saver EVO. Please note that it may take a few seconds, or even over a minute for your computer's operating system to recognize that a card is present in the card reader.
2. From the start screen, click the "samaritan PDU" button. This will open the window below.



**Saver EVO PDU Access screen**

\* samaritan PDU was not available in the U.S. and is no longer a product offered by HeartSine.

**PDU Data**

Click this button to retrieve event data from a PDU Memory card. *See page 10 for details*

**PDU Settings**

Click this button to view configuration settings. *See page 12 for details*

**Back**

Click this button to return to the Saver EVO start screen


## Retrieve event data from the PDU memory card

Ensure that the samaritan PDU memory card is inserted into the SD/MMC card reader and click the “PDU Data” button. This will list the events that are recorded on the Memory Card.



### Saver EVO PDU Event Log List screen

Events with the clock symbol  are PDU self tests that have passed successfully.

Events shown in green text with a  symbol are events that have already been saved to the PC.

**Save All**

This button is disabled in PDU mode

**View**

Clicking on this button will cause the selected event to be displayed. *See page 11 for details*

**Erase**

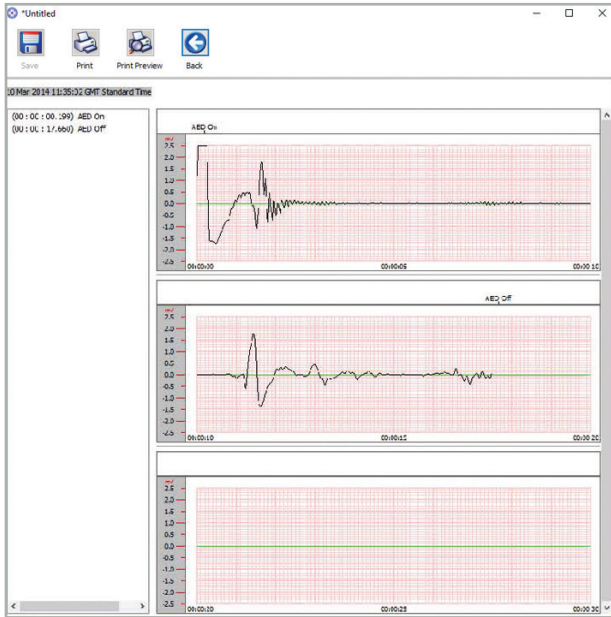
This button is disabled in PDU Mode

**Back**

Click this button to return to the Saver EVO PDU access screen

## Viewing events stored on a PDU

- To view an event, highlight the event in the list and then click the “View” button. This will display the defibrillation event with the ECG trace and the event log in a single viewing window:



Saver EVO PDU Event View window

- The user can now choose to save this displayed event to the PC by clicking the “Save” button. This provides options to enter information to be able to identify the patient. The details about the patient can consist of alphanumeric characters and each field can be completed or left blank if desired.

Saver EVO PDU Patient Details window

**Note:** Once the defibrillation event data is saved to your PC this information cannot be changed

The Saver EVO event view window also provides the following buttons:

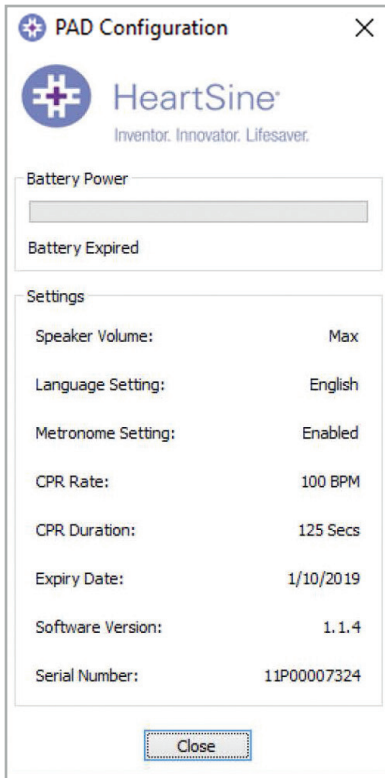
**Print** Click this button to print the event currently displayed in the view window

**Print Preview** Clicking on this button will cause a preview of the printed data to be displayed on screen

**Back** Click this button to return to the Saver EVO PAD event log list screen

## View PDU settings

Clicking on the “PDU Settings” button will access the following PDU Configuration screen. This screen allows the user to view the battery power, speaker volume, language and metronome settings, the CPR rate and duration and the expiry date, software version and serial number of the PDU device. The user may only view these settings and may not make any changes.

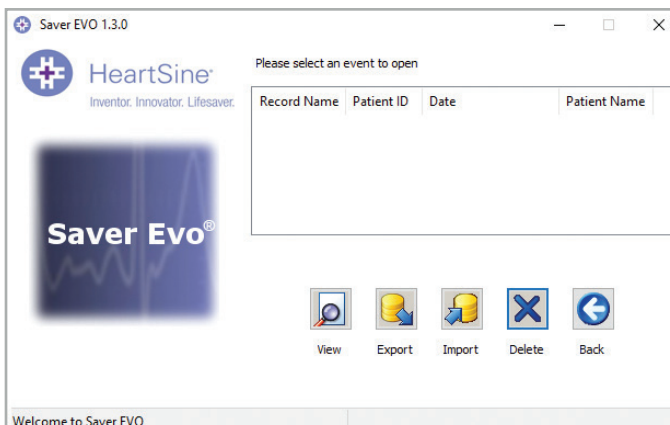


Saver EVO View PDU Settings window

## Using Saver EVO with saved events

The “Manage Saved Events” button on the main screen of Saver EVO allows users to review event data that has been downloaded from the HeartSine samaritan PAD, samaritan Data-Pak battery or PDU Memory Card and saved to the computer.

1. Clicking this button will open a window as follows:



2. Highlighting an event in the list and clicking “View” will open the saved event to view the ECG data and event log.

## Export and import

Saver EVO has functions that allow users to send or receive defibrillation event data to other people who have the Saver EVO software. To send or receive copies of saved events uses the Export and Import functions of Saver EVO .

### To export events:

1. From the Manage Saved Events screen highlight the event or a number of events that you wish to export and then click the "Export" button.
2. The PC will ask for a location on the computer that you wish to save the export file, and also let you choose a name for the exported file.
3. Click the "Save" button to save the file in the chosen location.

It is then possible to attach this file to an e-mail using your normal e-mail software and send the exported file to another user who has the Saver EVO software.

Event data from Saver EVO can only be viewed by another Saver EVO user. The previous Saver software will not successfully import and display data from Saver EVO.

### To import events:

To import events and view these on your PC, the file that has been sent to you from another user of Saver or Saver EVO needs to be saved to a location on your PC.

1. From the Saver EVO Manage Saved Events screen click the "Import" button.
2. Browse to the location where the file was saved and click "Open."
3. The records will be added to the list of Saver EVO files on your computer.


These can then be viewed by highlighting the event in the list and clicking the "View" button.

**Saver EVO will correctly import and display event data that has been exported from the previous version of software called Saver.**

### To delete saved events:

Saved events can be erased from your computer memory by Saver EVO. Events are erased individually by selecting the event(s) to be erased (multiple events can be selected) by highlighting the relevant event.

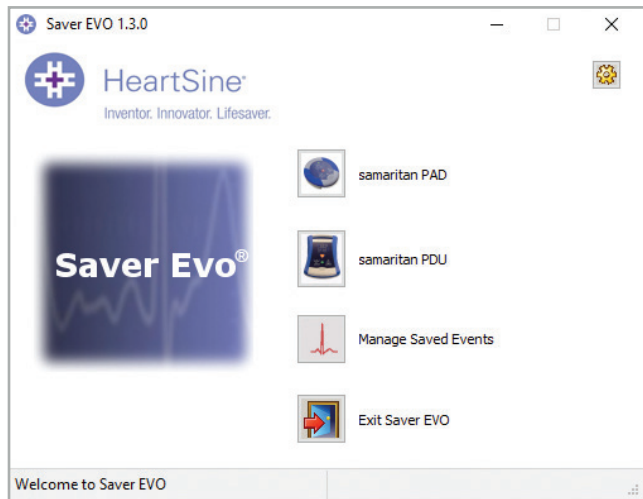
When you have confirmed that only the events you wish to erase have been selected click the "Erase" button. As a caution Saver EVO will ask you to enter your Password prior to the memory being erased. When the correct password is entered the memory of the selected events will be erased from your computer.

 **Caution:** Please ensure that only the events you want to erase have been selected prior to erasing. Once erased from your computers memory events cannot be regenerated and all information will be lost

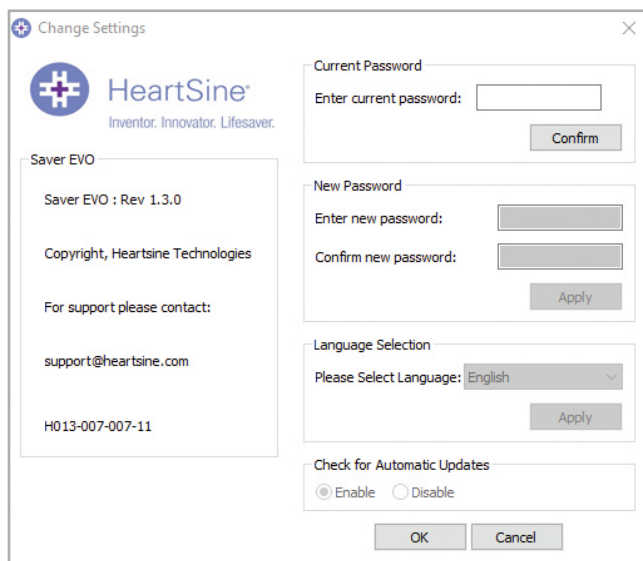
## Change Saver EVO settings

Saver EVO has some functions that can only be changed or completed by entering a password. This allows administrators of the software to restrict access to certain capabilities to authorized users. Upon installation of Saver EVO, the default password is “password.”

### To change the password:



1. From this main Saver EVO screen click the small “Settings” button. This will open the following window:



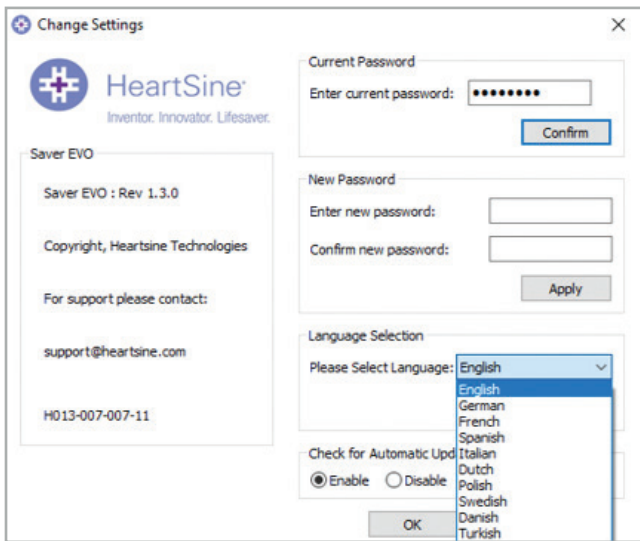
### Change Settings screen

2. Enter the current password and click “Confirm.”
3. Enter the new password twice and click “Apply” to make the change.
4. Click “OK” to close the Change Password window.

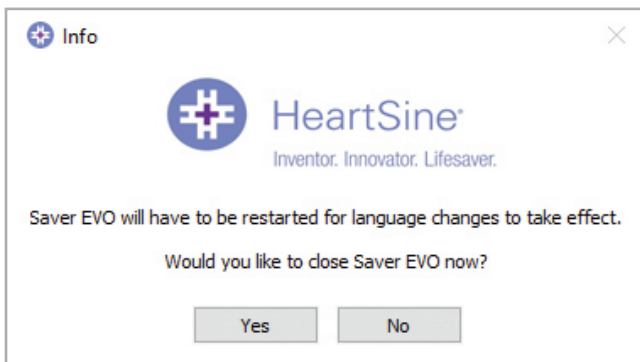
**Note:** Reinstalling Saver EVO will reset the password to the default in the software. This action however will not remove any event data that has previously been saved

**To change the Saver EVO language:**

1. To choose the language for Saver EVO, select the language from the drop-down list and click “Apply.”



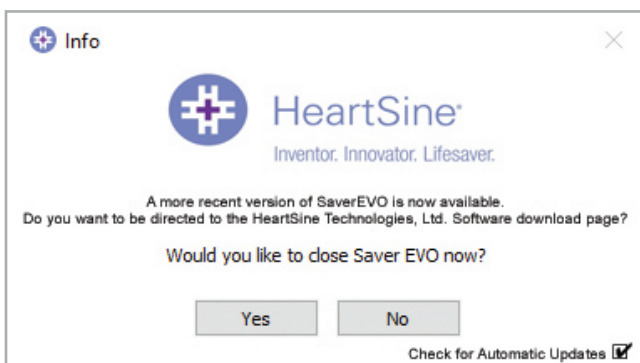
2. Upon clicking “Apply,” the following screen will appear and Saver EVO must be restarted for the language changes to take effect.



3. Click “Yes” or “No” accordingly to close Saver EVO.

**To check for automatic updates:**

1. If the “Enable” box is selected each time Saver EVO is started, it will attempt to connect with the HeartSine website to check for more recent versions of Saver EVO. If an update is available you will be prompted with the following window when Saver EVO is launched.



2. Click “Yes” or “No” accordingly if you want to download a newer version of Saver EVO.

## Cyber security

- Ensure all Microsoft security patches are applied for your computer
- Regularly back up your computer (including Saver EVO files)
- It is recommended that an anti-virus/anti-malware software is installed on your computer, is active and is kept up-to-date
- Use a strong password to log on to your computer. Password should be in upper and lower case and include numbers and symbols

---

**For further information contact us at [heartsinesupport@stryker.com](mailto:heartsinesupport@stryker.com) or visit our website at [heartsine.com](https://www.heartsine.com)**

Stryker or its affiliated entities own, use, or have applied for the following trademarks or service marks: HeartSine, HeartSine Gateway, samaritan, Saver EVO, Stryker. All other trademarks are trademarks of their respective owners or holders.

Date of Issue: 09/2023

Made in U.K.

H013-001-300-AL EN-UK

HeartSine Gateway is not available in all countries.

© 2023 HeartSine Technologies. All rights reserved.



HeartSine Technologies, Ltd.  
207 Airport Road West  
Belfast  
Northern Ireland  
BT3 9ED  
United Kingdom  
Tel +44 28 9093 9400  
Fax +44 28 9093 9401  
[heartsinesupport@stryker.com](mailto:heartsinesupport@stryker.com)  
[heartsine.com](https://www.heartsine.com)

Stryker Australia Pty Ltd  
8 Herbert St  
St Leonards NSW 2065  
Australia



Stryker EMEA  
Supply Chain Services B.V.  
Frans Maasweg 2  
Venlo 5928 SB  
The Netherlands